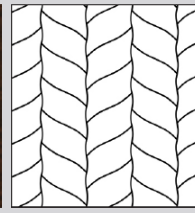




MOSAIC WOOD FLOORS FLOORS I TECHNICAL INFORMATION

Product # 1186-1526-10



DARK WOOD COLLECTION DECOR | LONDON

Wood species | Oak
Selection | Select & Better
Pattern | Tealeaf
Constructions | 3-layer flooring T&G
Size | 19,05x190x350 mm (3/4"x7 1/2"x13 3/4")
Finish | Silk mat finish

CONSTRUCTION: 3-LAYER FLOORING T&G

DIMENSIONS :			PACKAGING :	
			BOX	PALLET
Thickness	19,05 mm (3/4")	Content	1,2 m2	40 box (48 m2)
Width	190 mm (7 1/2")	Weigh	15 kg	626 kg
Length	350 (13 3/4")	H x W x L	195 x 405 x 470 mm	1113 x 800 x 1 880 mm
Average length		Content	12,912 sq.ft.	516,480 sq.ft.
Microbevel	0,5 mm	Weigh	16 lb	650 lb
Joint type	T&G	H x W x L	8" x 16" x 22" mm	44" x 32" x 74" mm

DEVIATIONS:

Deviation on Thickness	± 0,2 mm	EN 13489 ГОСТ 862.3
Deviation on Length	± 0,3 mm	
Deviation on Width	± 0,2 mm	
Angle deviation of planks	≤ 0,25 mm	
Cup	≤ 0,2 % of width	EN 13489
Bow	≤ 0,5 % of length	
Spring	≤ 0,1 % of length	

CHARACTERISTICS:

Fire resistance	Dfl-s1	EN 14342
Formaldehyde emission class	E1	
Pentachlorophenol content	None	
Thermal resistance	0,082 m2·K/W	
Thermal conductivity	0,161 W/(m·K)	
Structural warranty	Lifetime	

УСТАНОВКА:



Glue down over concrete, plywood or wooden subfloor or nail down over wooden subfloor. Applicable above, on and below ground level. Suitable for installation over radiant heating systems.

УСЛОВИЯ ЭКСПЛУАТАЦИИ И ХРАНЕНИЯ:



— Air humidity 40% – 65%
 — Temperature +18 °C – +22 °C

FINISH : SILK MAT FINISH

DESCRIPTION :	
Type of coating	UV-cured modified polyurethane-acrylate
Surface (finish) type	Semi-closed pores, wire brushed
Sheen	Matte, 2-7 GU/60°
Finish warranty	-

CLASSIFICATION SURFACE CHARACTERISTICS:

Wear resistance	Not rated	EN 438-2
Scratch resistance	Not rated	EN 438
Slip resistance	50 (SRV dry)	EN 15676
Resistance to chemical agents	Class 5 (Except blue ink)	EN 13442
Repairability	Medium	

MAINTENANCE AND CARE CONDITIONS :

Maintenance of hardwood floors with Silk finish assumes regular (daily if necessary) cleaning from dust and grit using a vacuum, followed by a thorough cleaning with Coswick Hardwood Floor Cleaner or other similar product. Floor surface areas that receive the most traffic and get worn down quicker, such as areas by the front door, hallways, kitchens etc., should be periodically renewed with special Coswick Restorative Oil. This product restores the protective surface film. Frequency of use depends on type of interior and intensity of foot traffic. For residential interiors, restorative cleaning should be done once in 3-5 years; for public and commercial interiors with intense foot traffic, it is recommended to use the product 2-4 times a year.

GRADE : SELECT & BETTER

DESCRIPTION:		DESCRIPTION:	
Sound sapwood	Non-contrasting sapwood is allowed up to 25% of plank area	Bark pocket	Permitted up to 10 mm in length, up to 3 mm in width, filled
Colour variation	Permitted slight colour variation	Pith	Permitted healthy heart
Knot	Permitted up to 10 mm, filled	Slope of grain	Permitted
Crecks	Not permitted	Medullary ray	Permitted

COSWICK Ltd.

2B Kolasa Str., 223034 Zaslavl, Republic of Belarus
 Tel.: +375-17-543-2012, Fax: +375-17-543-2020, E-mail: sales@coswick.com
 www.coswick.com

