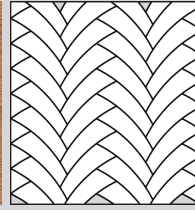




# MOSAIC WOOD FLOORS FLOORS | TECHNICAL INFORMATION

Product # 1110-1841-10

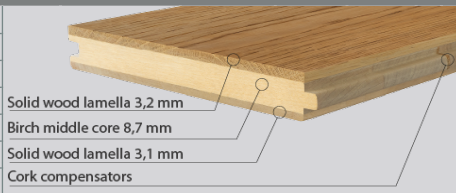


## NATURAL TOUCH COLLECTION DECOR | STRAW

**Wood species** Oak  
**Selection** | Select & Better  
**Pattern** | Elsinore  
**Constructions** 3-layer flooring T&G  
**Size** | 15x185,28x530.72 mm (5/8"x7 5/16"x20 7/8")  
**Finish** | Silk mat finish

### CONSTRUCTION: 3-LAYER FLOORING T&G

DIMENSIONS :	
Thickness	15 mm (5/8")
Width	185,28 mm (7 5/16")
Length	530.72 (20 7/8")
Average length	
Microbevel	0,5 mm
Joint type	T&G



PACKAGING :	BOX	PALLET
Content	1,656 m2	30 box (49,68 m2)
Weight	17 kg	532 kg
H x W x L	195 x 395 x 560 mm	1121 x 800 x 1 750 mm
Content	17,819 sq.ft.	534,557 sq.ft.
Weight	18 lb	556 lb
H x W x L	8" x 16" x 22" mm	45" x 32" x 69" mm

### CHARACTERISTICS:

Fire resistance	Dfl-s1	EN 14342
Formaldehyde emission class	E1	
Pentachlorophenol content	None	
Thermal resistance	0,095 m2 K/W	
Thermal conductivity	0,158 W/(m·K)	
Structural warranty	Lifetime	

### INSTALLATION :



Glue down over concrete, plywood or wooden subfloor or nail down over wooden subfloor. Applicable above, on and below ground level. Suitable for installation over radiant heating systems.

### STORAGE AND USAGE :



— Air humidity 40% – 65%  
 — Temperature +18 °C – +22 °C

### FINISH : SILK MAT FINISH

DESCRIPTION	
Type of coating	UV-cured modified polyurethane-acrylate
Surface (finish) type	Semi-closed pores, wire brushed
Sheen	Matte, 2–5 GU/60°
Finish warranty	-

### CLASSIFICATION SURFACE CHARACTERISTICS:

Wear resistance	Not rated	EN 438-2
Scratch resistance	Not rated	EN 438
Slip resistance	50 (SRV dry)	EN 15676
Resistance to chemical agents	Class 5 (Except blue ink)	EN 13442
Repairability	Medium	

### MAINTENANCE AND CARE CONDITIONS :

Maintenance of hardwood floors with Silk finish assumes regular (daily if necessary) cleaning from dust and grit using a vacuum, followed by a thorough cleaning with Coswick Hardwood Floor Cleaner or other similar product. Floor surface areas that receive the most traffic and get worn down quicker, such as areas by the front door, hallways, kitchens etc., should be periodically renewed with special Coswick Restorative Oil. This product restores the protective surface film. Frequency of use depends on type of interior and intensity of foot traffic. For residential interiors, restorative cleaning should be done once in 3-5 years; for public and commercial interiors with intense foot traffic, it is recommended to use the product 2-4 times a year.

### SELECTION SELECT & BETTER

DESCRIPTION:		DESCRIPTION:	
Sound sapwood	Non-contrasting sapwood is allowed up to 25% of plank area	Bark pocket	Permitted up to 10 mm in length, up to 3 mm in width, filled
Colour variation	Permitted slight colour variation	Pith	Permitted healthy heart
Knot	Permitted up to 10 mm, filled	Slope of grain	Permitted
Cracks	Not permitted	Medullary ray	Permitted

COSWICK Ltd.

2B Kolasa Str., 223034 Zaslavl, Republic of Belarus

Tel.: +375-17-543-2012, Fax: +375-17-543-2020, E-mail: sales@coswick.com

www.coswick.com

